

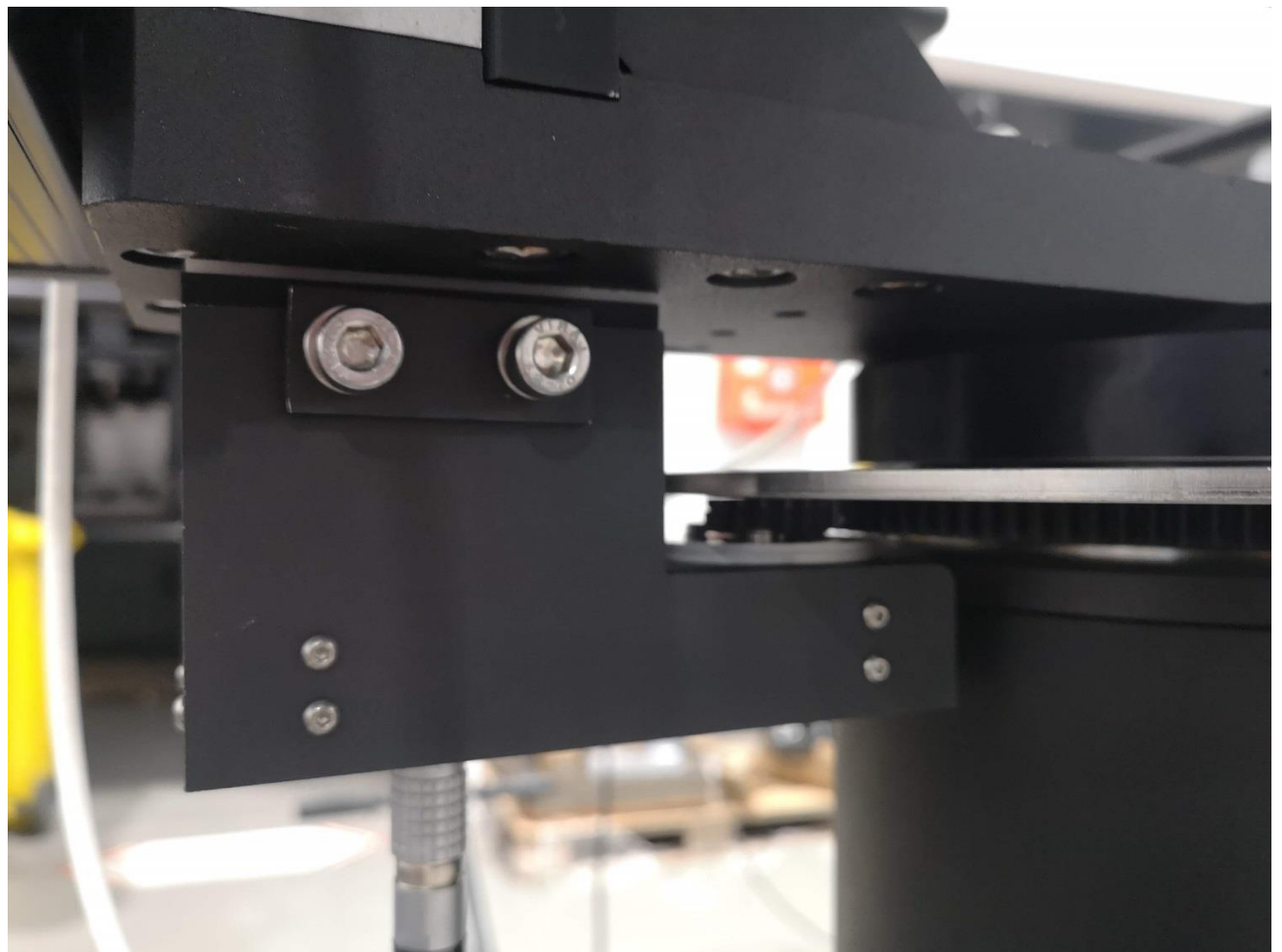


**Step 1** Install the column so that the labels with the serial number are on the same side



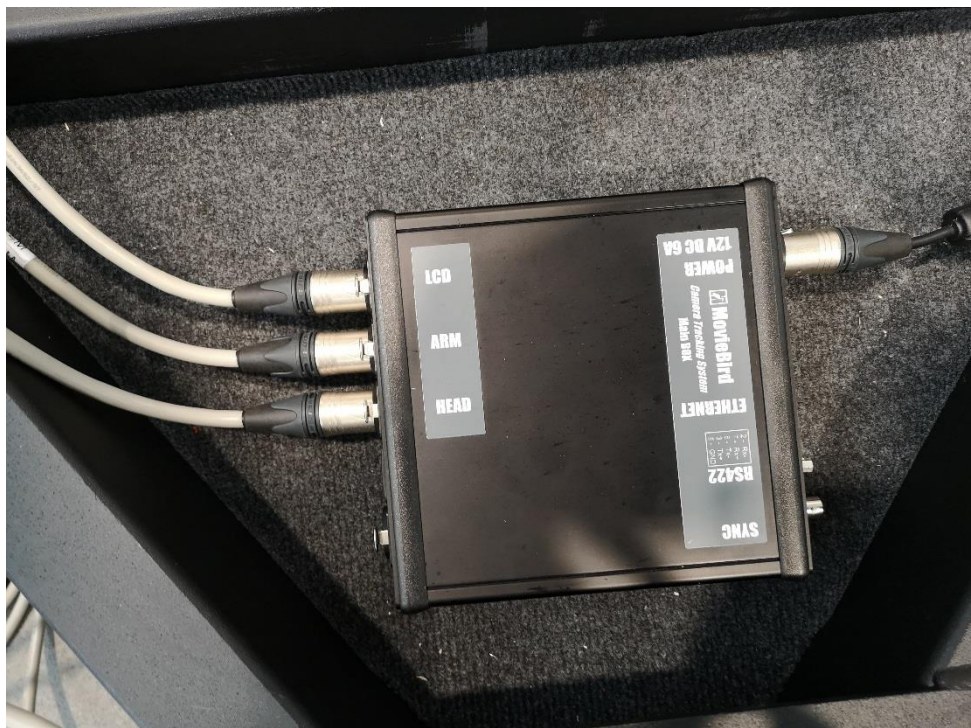
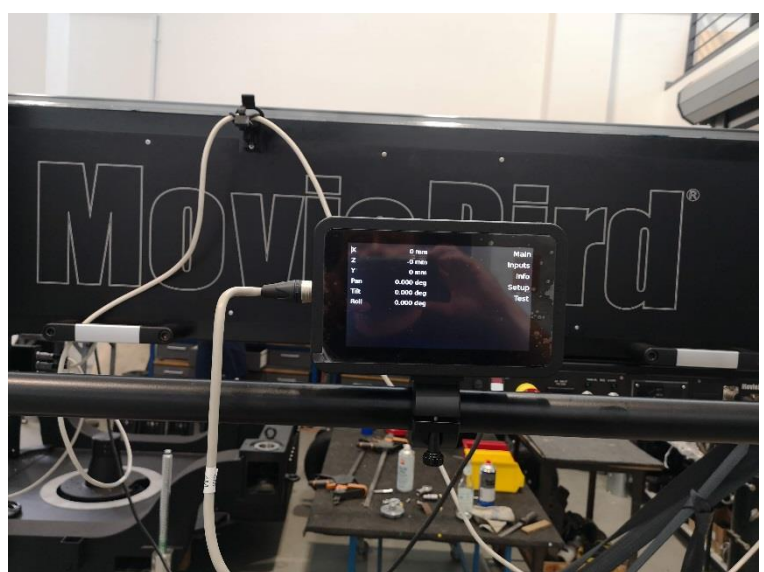
**Step 2** Install the PAN encoder so that the markings on the gears are aligned

## ARM Pan Encoder



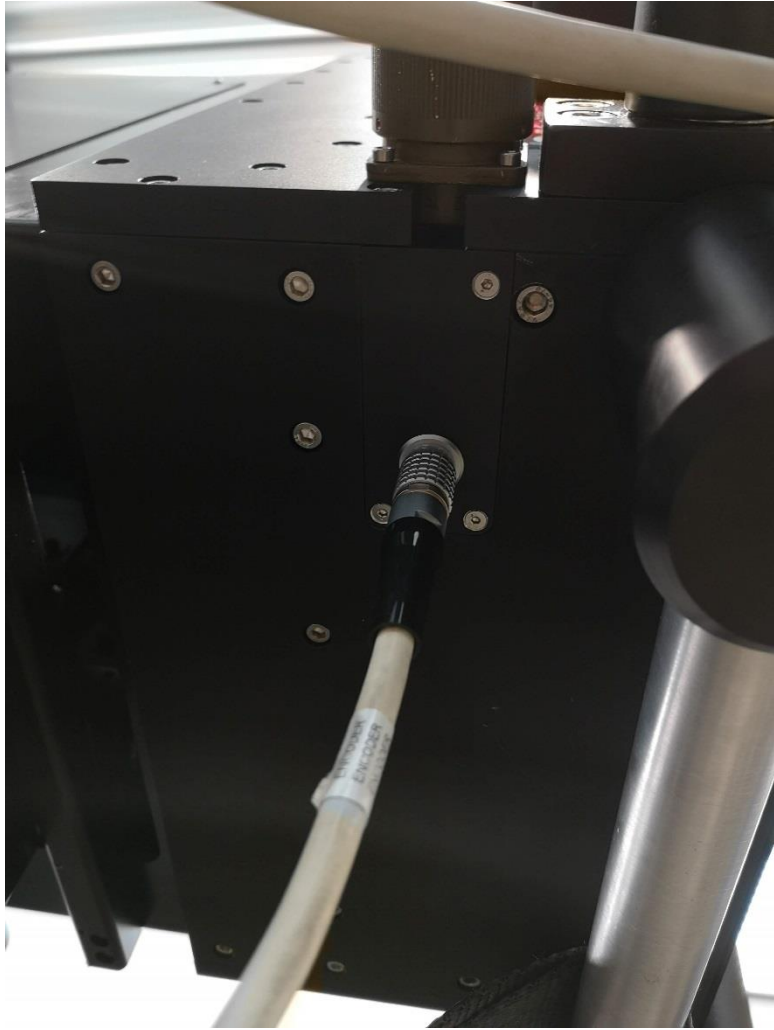


### Step 3 Install the boxes on the ARM

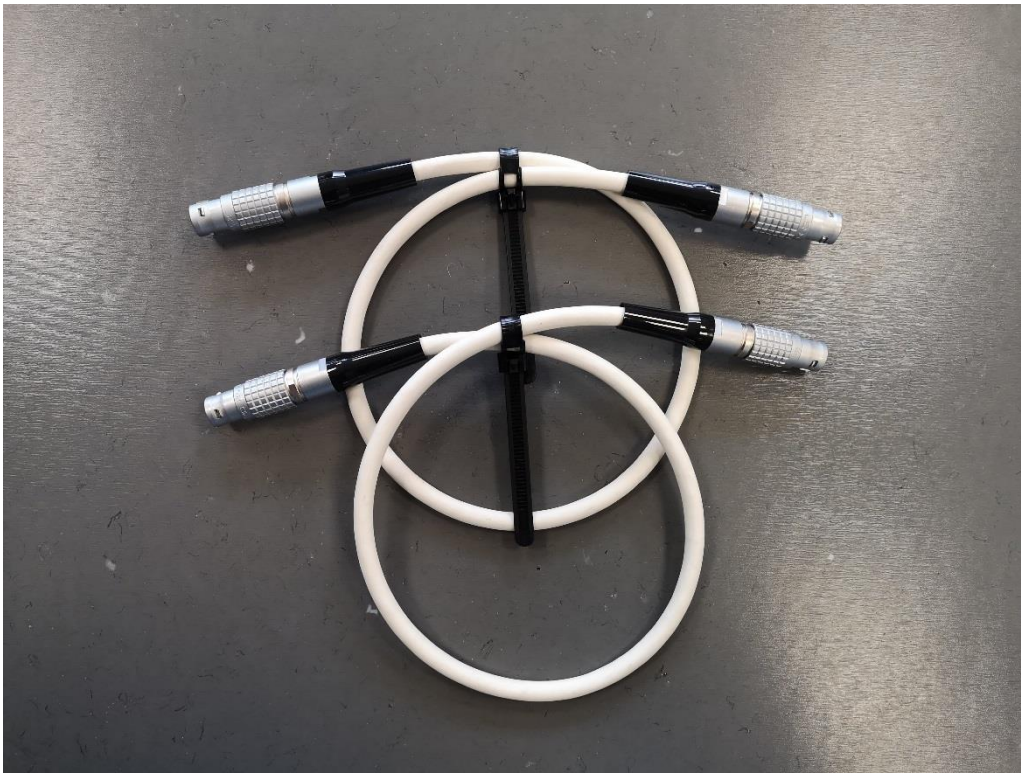


**Step 4** Connect all system elements with cables, follow the descriptions on the boxes

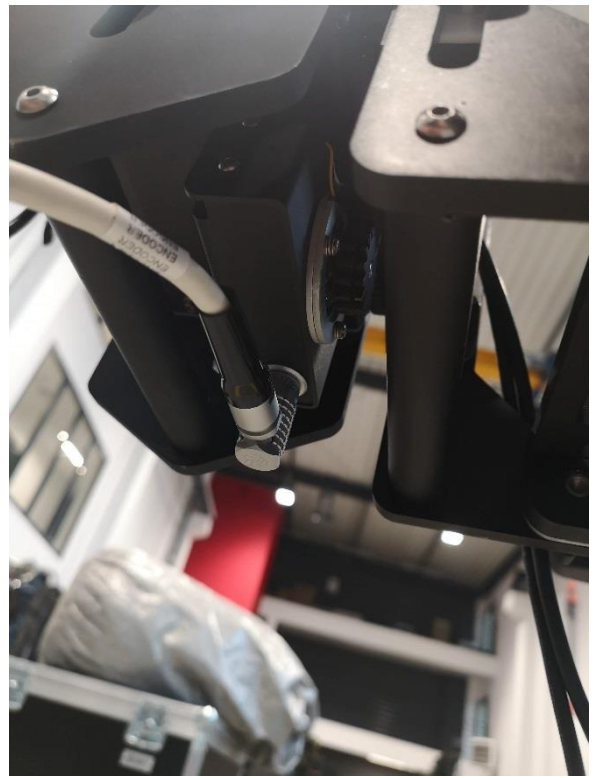
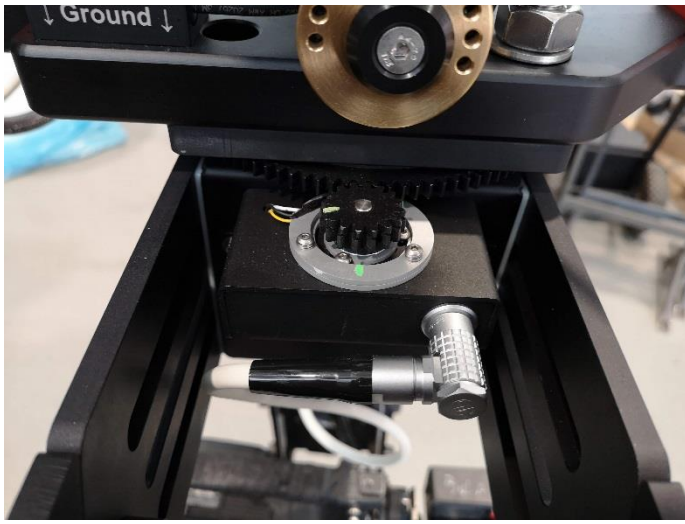




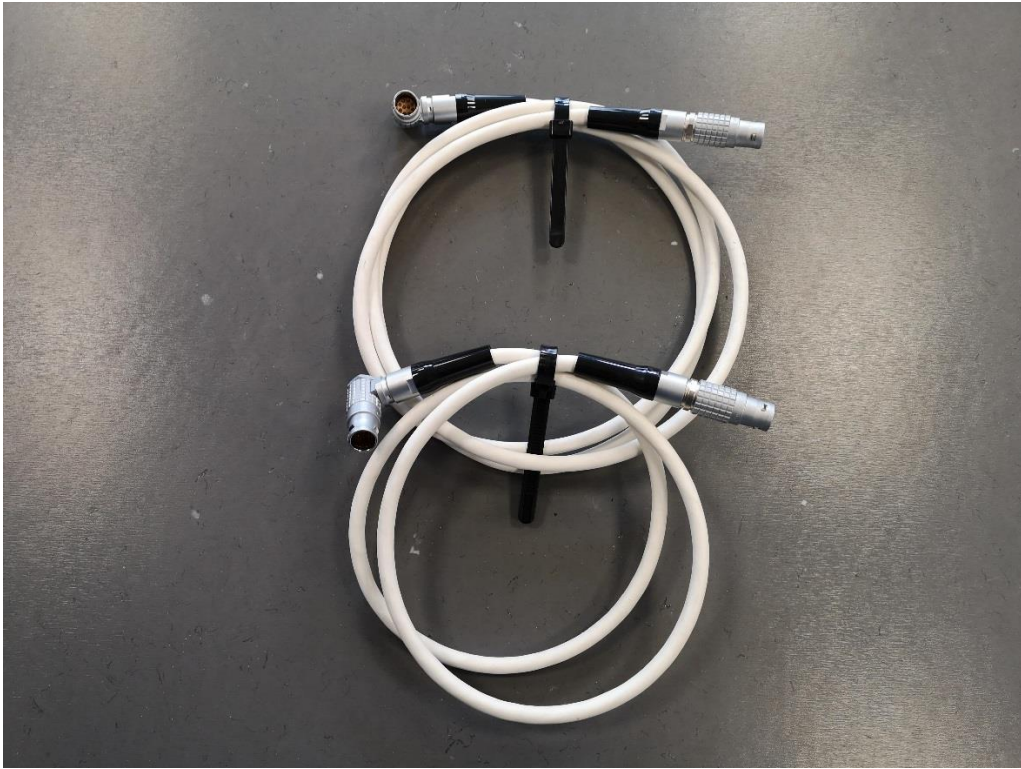




**ARM Motor Encoder Cable**







**PAN, TILT Head Encoders Cables**

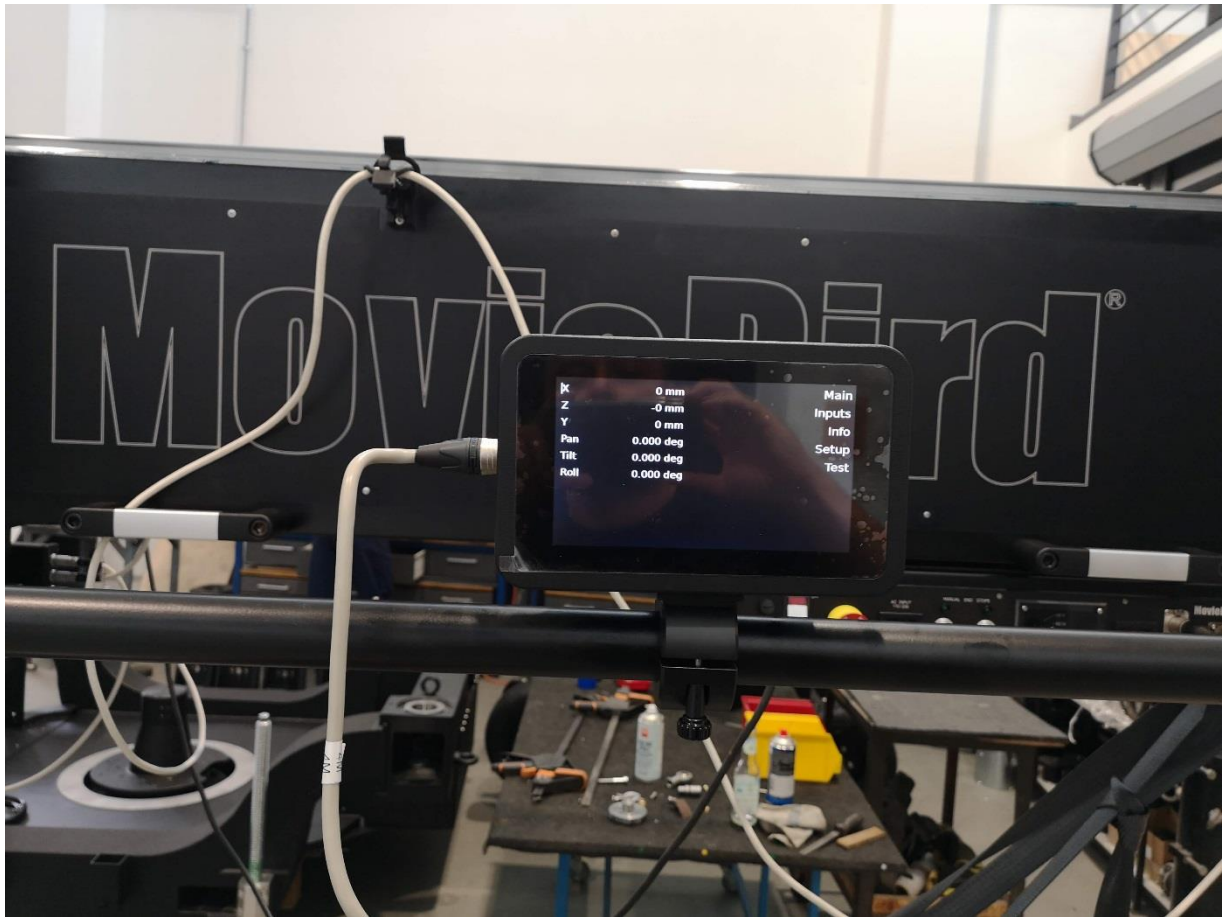


**ARM Box <-> Main BOX 4m Cable**



**Head BOX <-> Main Box 12m Cable**





**LCD <-> Main Box Cable**

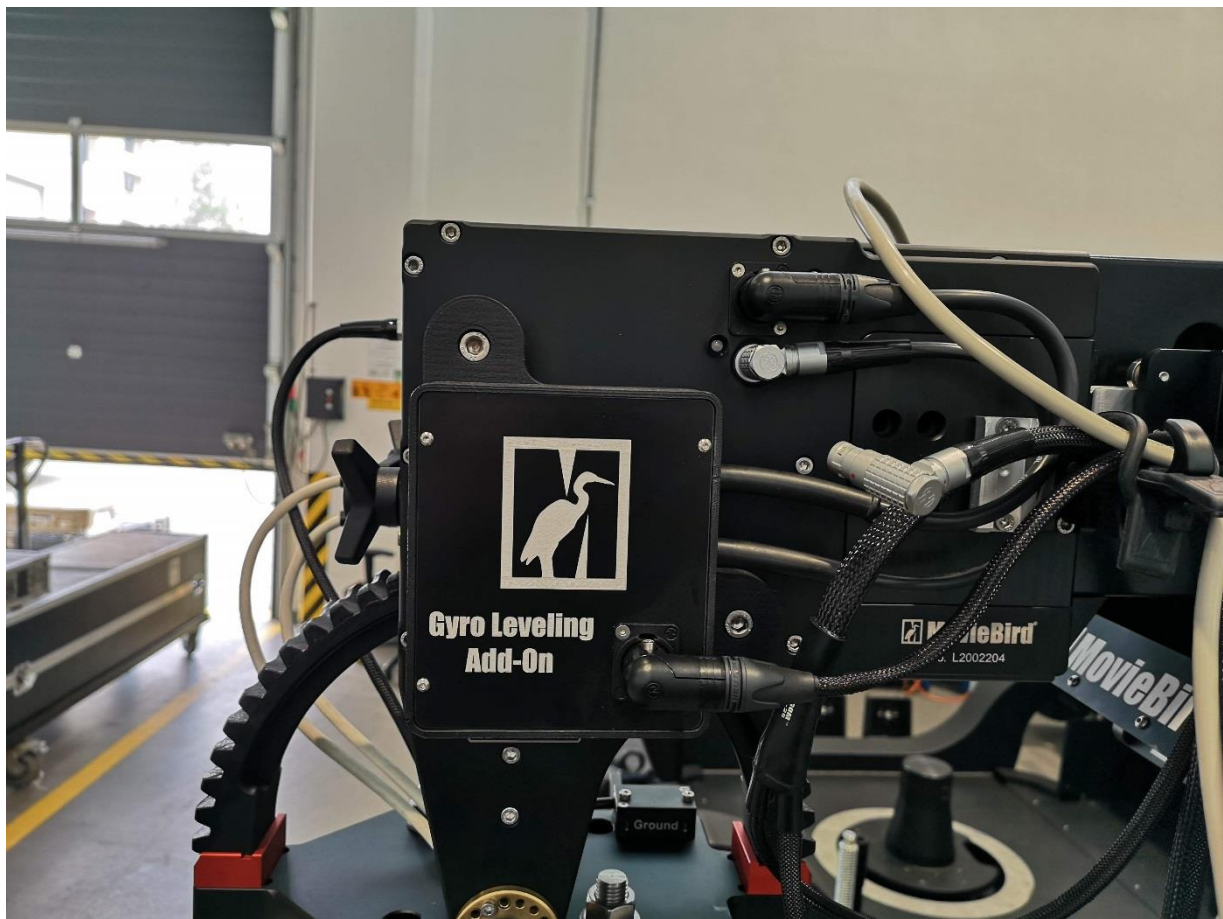


**Step 5** Connect the Head BOX to the lens with the correct cable. Pay attention to the lens brand and type of the connector





**Step 6** Unscrew the handle from Leveling Head and screw in the GLA in its place



**GLA Deflection compensation**

